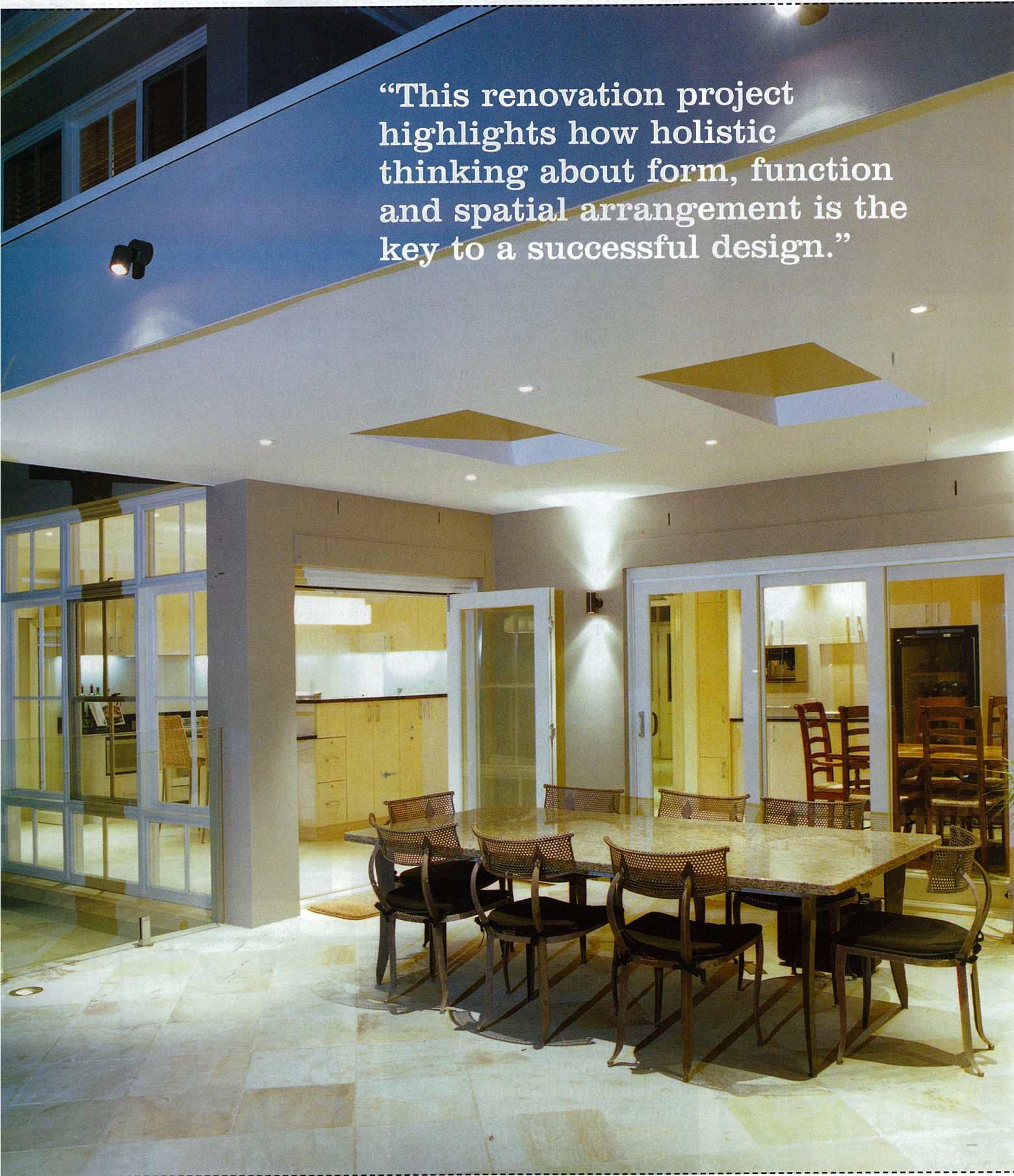


“This renovation project highlights how holistic thinking about form, function and spatial arrangement is the key to a successful design.”



View from the dining room  
and the kitchen splashback.



# The back end

Words by Suni Golightly Photography by Mark Cranitch

Redesigning the rear of this dated house has completely transformed the entire home.

ORIGINALLY BUILT IN THE EARLY 1990s, this two-storey traditional-style prestige project home was built from face brickwork with sandstone corner stone detailing, with a tiled roof, timber framed windows, and timber detailing on the gable ends and windows. The rear pool and patio area had a very basic acrylic sheet patio cover, and the tiles and pool coping were terracotta with a chunky powdercoated aluminium-framed glass pool fence. The appearance of the house had dated quickly and badly in the short time since it was originally built.

When the clients bought architect Melonie Bayle-Smith on board to transform their home, they were clear on what their tired house needed. "The aim for the project was to create an intimate connection between the rear part of the dwelling to the outdoor entertaining areas," Bayle-Smith says, "and to reconfigure the relationship between the everyday living and dining spaces."

Overall the clients wanted a modern approach that would improve the look of the building and allow the maximum use of the available space, both inside and out. To achieve this, an extensive program of work was carried out: the laundry, kitchen and patio roof were demolished; the pool fence and all exterior finishes were removed; a new slab was constructed over the existing patio, creating a new step parallel to the pool edge; the doorway between formal dining room and existing kitchen was in-filled to allow for the new snack pantry; the wall between the existing family dining and rumpus area was extended to allow for the installation of a new highly appointed gourmet kitchen and snack pantry; the existing kitchen area was converted into the new family dining area that opens out onto the covered patio area; a new covered patio roof with skylights, integrated lighting, and an external rangehood was constructed; the existing bar was converted into the new laundry; rendered planterboxes, an outdoor feature wall and a new frameless glass pool fence were created; and exterior feature lighting was added to the base of patio columns, planterboxes and patio roof parapet.

Reconfiguring the inappropriate floorplan at the rear of the dwelling was the key to the success of this project. The outdoor patio 'room', accessed by bi-folding and sliding doors to the new internal family dining space and large gourmet kitchen, gives the home much-improved light and air flow, with the laundry relocated to the space occupied by a bar off the rumpus room, giving more space over to the open-plan everyday dining and kitchen space. In addition, the pool area has been refurbished and the floor height of the patio raised in line with that of the interior flooring.

"I wanted to create real focal points for the house, internally, from the inside looking out and from the outdoors looking to the landscaped surrounds. My inspiration was to utilise a clean,



**Before**

elegant modernist approach that would produce a series of focused and highly functional spaces. The design and orientation of the existing house provided notable limitations with regard to the spatial and environmental opportunities. Although the site was surrounded by substantial trees and shrubbery, the landscaping most immediate to the dwelling was sparse and needed to focus better on scale and relationship in order to improve the intimacy of the indoor and outdoor spaces."

Despite these challenges, the project has been a huge success. Aesthetically, the renovated space is striking: contemporary, sleek and luxurious. The long, clean lines and stark colour palette combine to create a space which flows seamlessly from the indoors out, and one which offers visual points of interest in various and unexpected places. On a functional level the space works beautifully, with the new integrated rooms forming one huge entertaining area. Although the property is large and luxurious, Bayle-Smith's design brings a sense of warmth. The spaces are contemporary yet inviting.

Looking back to what was before, it is interesting to note that while the body of work carried out was extensive, the design is relatively simple, with many original features of the original plan retained but improved upon with clever planning and space management. Bayle-Smith agrees. "This renovation project encapsulated the significant yet surprisingly simple transformation of an ill-defined and inappropriate floorplan into a connected, flowing series of interior and exterior spaces," she says. "It particularly highlights how holistic thinking about form, function and spatial arrangement is key to a successful design." **r&e**



## Project particulars

The project was designed by **MELONIE BAYL-SMITH** and **STEPHEN GRAY** of **LIQUID ARCHITECTURE**, Suite 105, 8 Clarke Street, Crows Nest NSW 2065. Phone: (02) 9437 4759, 0425 264 283, email: mbs@liquidarchitecture.com.au, or go to [www.liquidarchitecture.com.au](http://www.liquidarchitecture.com.au). The project was built by David Lombardo of D.J. Building, phone: 0408 407 489. The kitchen was built by Chris Stapleton of Swagman Joinery, phone: (02) 4573 2022.

**FLOORING** Living Areas: Polished floor tiles from Amber Tiles

**WALLS** Kitchen and Family Dining Areas: Dulux 'Sandy Day' half strength

Patio Roof: Colorbond Kliplok in 'Paperbark'

Render to Existing Brickwork: Dulux 'Pottery' 1½ strength

Timber Trims and Architraves: Wattyl 'Plantation White'

Patio Roof Parapet: FC cladding, texture painted, Dulux 'Pottery' 1½ strength

Velux skylights to patio roof

**KITCHEN** Kitchen cabinetry: Formtek Gloss Swan Maple

Granite benchtop supplied by Overseas Granite

Hettich Innotech drawer fittings and other cabinetry fitout

Kethy custom-made rail handles

Smeg stove supplied direct by Smeg

Fridge: Owner's existing

All other appliances and plumbing fixtures supplied by Winnings Appliances: Qasair rangehood; Electrolux coffee machine; Liebherr wine fridge; Panasonic microwave; Franke sinks to island and side bench; Grohe mixer taps; Colorbacked glass splashback in Dulux 'Sandy Day' half strength by DecoGlaze (02) 9624 7099

**LIGHTING** Kitchen Countertop: Pendant light

Kitchen Bench Lighting: Fluoro recessed cabinetry lights

Internal Areas: LV halogen downlights

Covered Dining Area: LV exterior halogen downlights

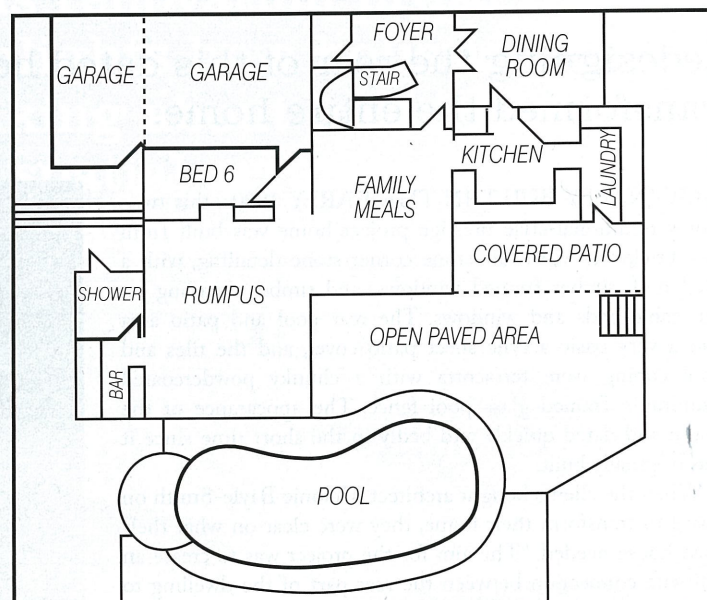
Outdoors: Hunza low-voltage outdoor lighting

**WINDOWS + EXTERNAL DOORS** Airlite custom-made timber-framed doors and windows

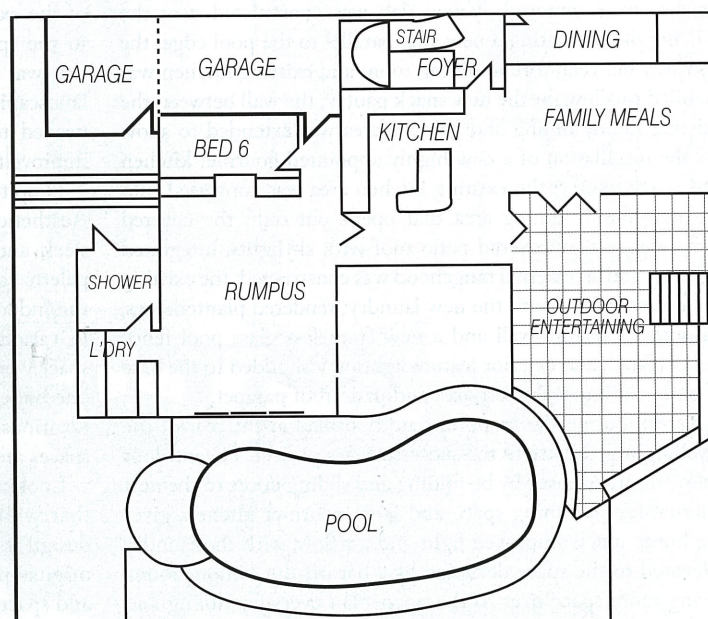
**OUTDOOR** Landscaping, decking, shading or paving details: Frameless glass balustrade manufactured and installed by Poolside Fencing Solutions, Woy Woy  
Rendered masonry planterboxes by builder  
Pavers + Pool Coping: Himalayan Sandstone  
Feature wall tiles from Tile Solutions Northbridge  
Soft landscaping by owner

Custom-made external rangehood for BBQ, powdercoated in 'Pottery' made by Superior Sheet Metal, Hornsby

## Before



## After







Reconfiguring the inappropriate floorplan at the rear of the dwelling was the key to the success of this project. The outdoor patio “room”, accessed by bifolding and sliding doors to the new internal family dining space and large gourmet kitchen, gives the home much-improved light and air flow, with the laundry relocated to the space occupied by a bar off the rumpus room, giving more space over to the open-plan everyday dining and kitchen space.

Architect Stephen Gray

